



PT. Kalimantan Prima Persada
 PT. Pamapersada Nusantara
 PT. Thiess Contractors Indonesia
 PT. Petrosea Tbk
 PT. Interport Mandiri Utama
 PT. Karya Bhumi Lestari
 PT. Pusat Sarana Baruna
 PT. Kariangau Gapura Terminal Energi
 PT. Adaro Indonesia
 PT. Arkananta Apta Pratista
 PT. Karunia Wahana Nusa
 PT. Karunia Armada Indonesia
 PT. Sumbawa Timur Mining
 PT. Vale Indonesia Tbk
 PT. Indexim Coalindo
 PT. Batu Biru Nusantara

PT. Kayan Putra Utama Coal
 PT. Kayan Marine Shipyard
 PT. Pertamina Lubricants
 PT. Semen Merah Putih
 PT. Armada Indonesia Mandiri
 PT. Gajah Tunggal
 PT. H&H Utama Internasional
 PT. Bis Industries
 PT. Harita Nickel
 PT. Universal Tekno Reksajaya
 PT. Weir Minerals Indonesia
 PT. Trakindo Utama
 PT. Kobexindo Tractor Tbk
 PT. Hexindo Adiperkasa Tbk
 PT. United Tractors Tbk
 PT. Multicrane Perkasa

Zuam Mitra Bersaudara

Office & Warehouse

Centra Bizpark 2 BRM No.10. Jl. Syarifuddin
 Yoes, RT.02 , Kel. Sepinggan Baru, Balikpapan
 Selatan, Kaltim

Workshop

AMD Kariangau RT 15 Kel. Karang Joang Kec.
 Balikpapan Utara

Representative Office

JL. Tekno Widya Pergudangan Taman Blok F,
 No.7, BSD , Tangerang Selatan, Tangerang,
 Banten, Indonesia.



PT. ZUAM MITRA BERSAUDARA



PT. Zuam Mitra Bersaudara

Perusahaan yang bergerak dibidang service Engineering yang berfokus pada penyelesaian masalah yang di timbulkan dan mengurangi beban biaya produksi dengan menyediakan part yang original dan pemeliharaan yang berkualitas. Yang didirikan pada tanggal 05 Desember 2017 Sesuai dengan Akte Notaris Nomor.09, Oleh Notaris Yuni Astuti, S.H.

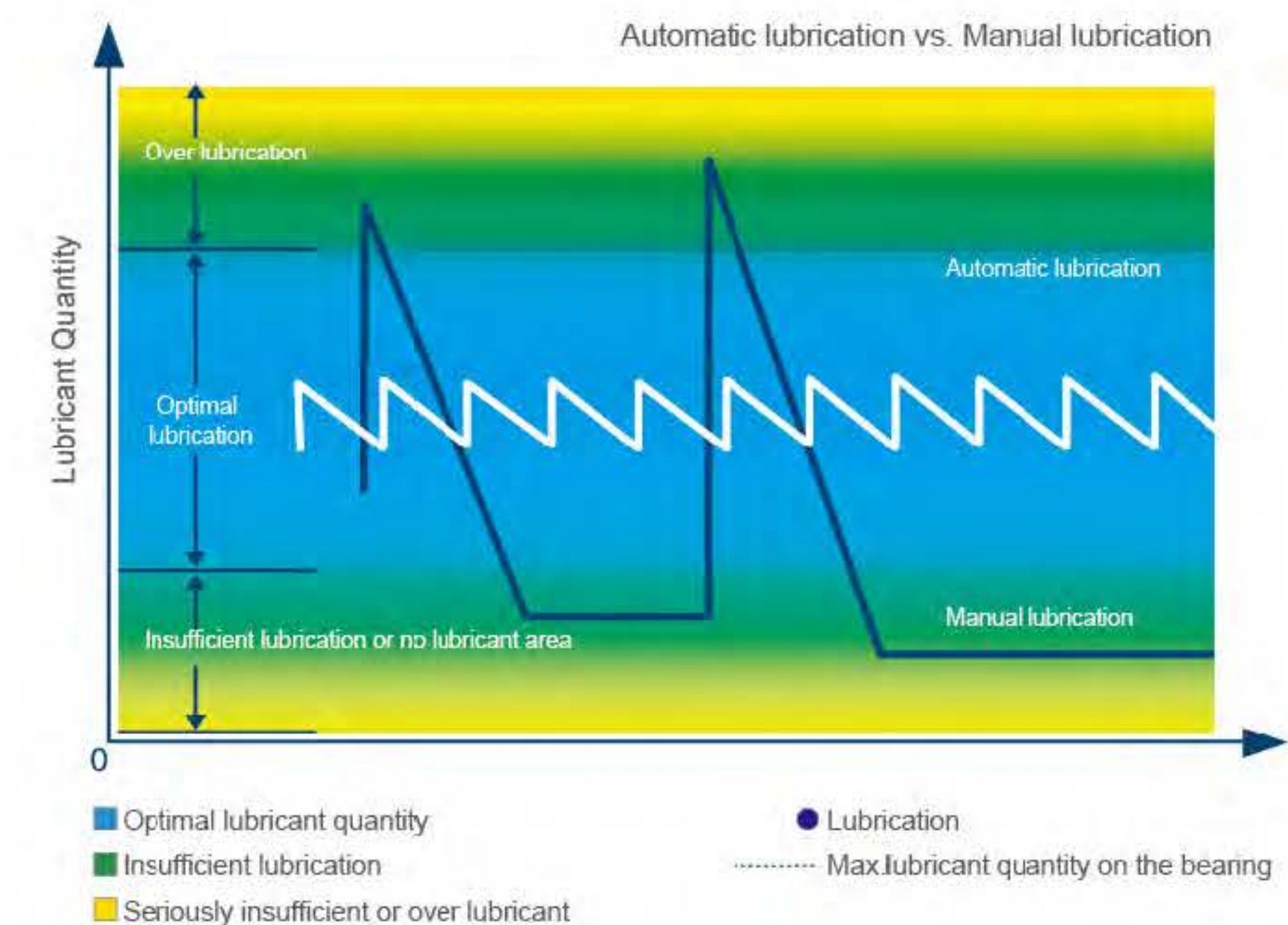


Clients Service



The Advantages of Z-Lube Centralized Lubrication System

- ☐ Grease or oil injection according to fixed time, location, quantity and sequence.
- ☐ Missing lubrication point through artificial injection can be avoided.
- ☐ Precise grease or oil injection schedule and quantity, reduced lubricant consumption and environment pollution.
- ☐ High-pressure system and grease or oil species with wide range.
- ☐ Compact structure, excellent performance, easy to install and easy to check and repair.
- ☐ Effective lubrication for equipment components, improved equipment service life, reduced cost of repair.
- ☐ Fault alarm and full-time monitoring for lubrication system.



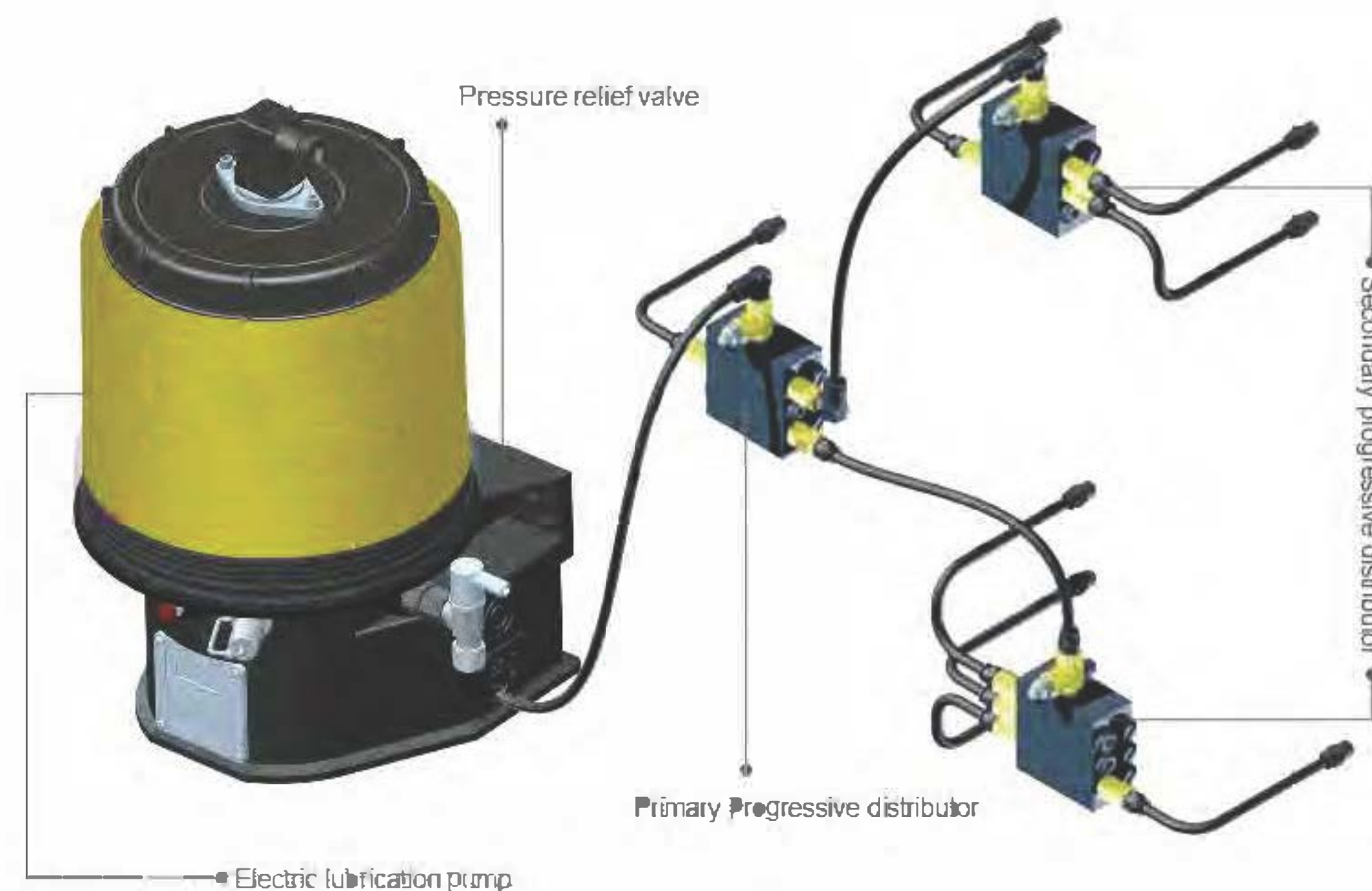


Z-Lube Progressive Lubrication System

Z-Lube centralized progressive lubrication system is composed of electric lubrication pump, progressive distributor, pipeline fittings and controller. Under the pumping pressure, the distributor can transport lubricant to each lubricating point. Based on reliable progressive work, this system can work under high pressure and fixed quantity, which enables itself to work at relatively large temperature difference. This system has an accurate grease or oil injection, which depends on the diameter of piston and work progress inside of distributor. It is easy to install, adjust and maintain. Suitable grease and oil: below NLGI 2# or above mineral oil 40mm²/s (Cst)

Z-Lube Progressive Lubrication System Features

- ☐ The points lubricated one by one through distributor's progressive work.
- ☐ Many scattered lubricating points.
- ☐ A larger lubricant requirement.
- ☐ A relatively shorter lubricating distance, not exceeding 10m.
- ☐ A multiplied lubricant increase in each lubricating point.
- ☐ Continuous lubrication.
- ☐ System monitoring through distributor and pump.

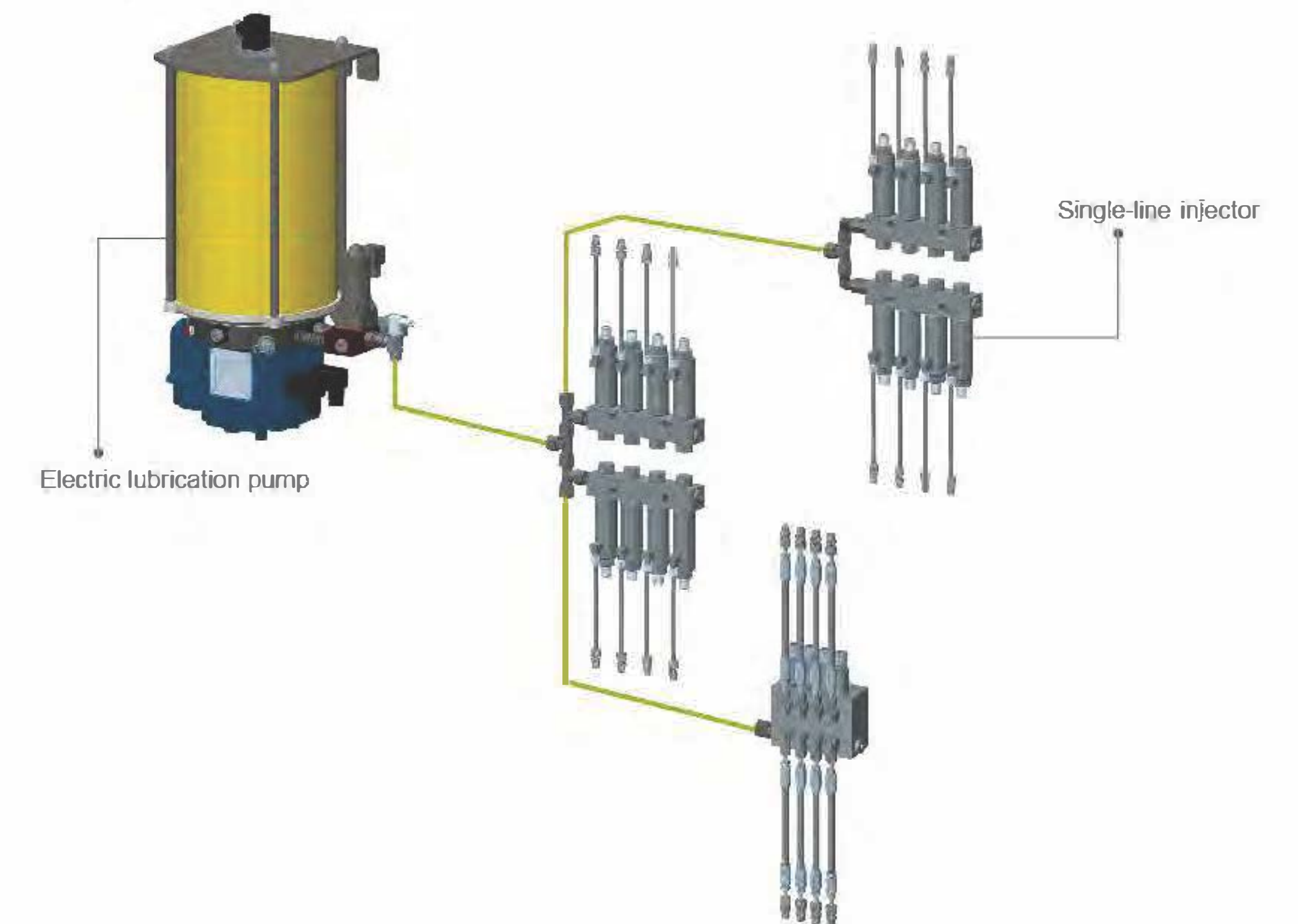


Z-Lube Single Line Lubrication System

Z-Lube single-line centralized lubrication system consists of electric lubrication pumps, control systems, injector, piping and other accessories. Under pump pressure, single-line injector delivery lubricant to each lubrication points.

Z-Lube Single Line Lubrication System Features

- ☐ One main line and each independent injector ensure that local branch lubrication failure has no impact on other branch's normal work.
- ☐ It is easy to install and operate and extend system;
- ☐ Each injector has a visual monitoring, judging failure easily through observation of indicator pin movement;
- ☐ Adjustable displacement ;
- ☐ The system can delivery lubricant even at low temperature with Max. Pressure (350bar).
- ☐ It is easy to operate with system integrated control unit.
- ☐ Pressure switch and safety valve in the control unit monitor the system to build up and relief pressure.
- ☐ External pressure check and level control are available.
- ☐ Automatic fault alarm.





Z-Lube Single-line Injector and Lubrication System Compatible with Suction Element

Suction Element

ESE-01 suction element is specially developed and applied to the generator bearing of MW grade wind turbine. It absorbs the waste grease in the bearing, along with the single-line lubrication system.

Technical Parameters

Max. Operating pressure: 300 bar

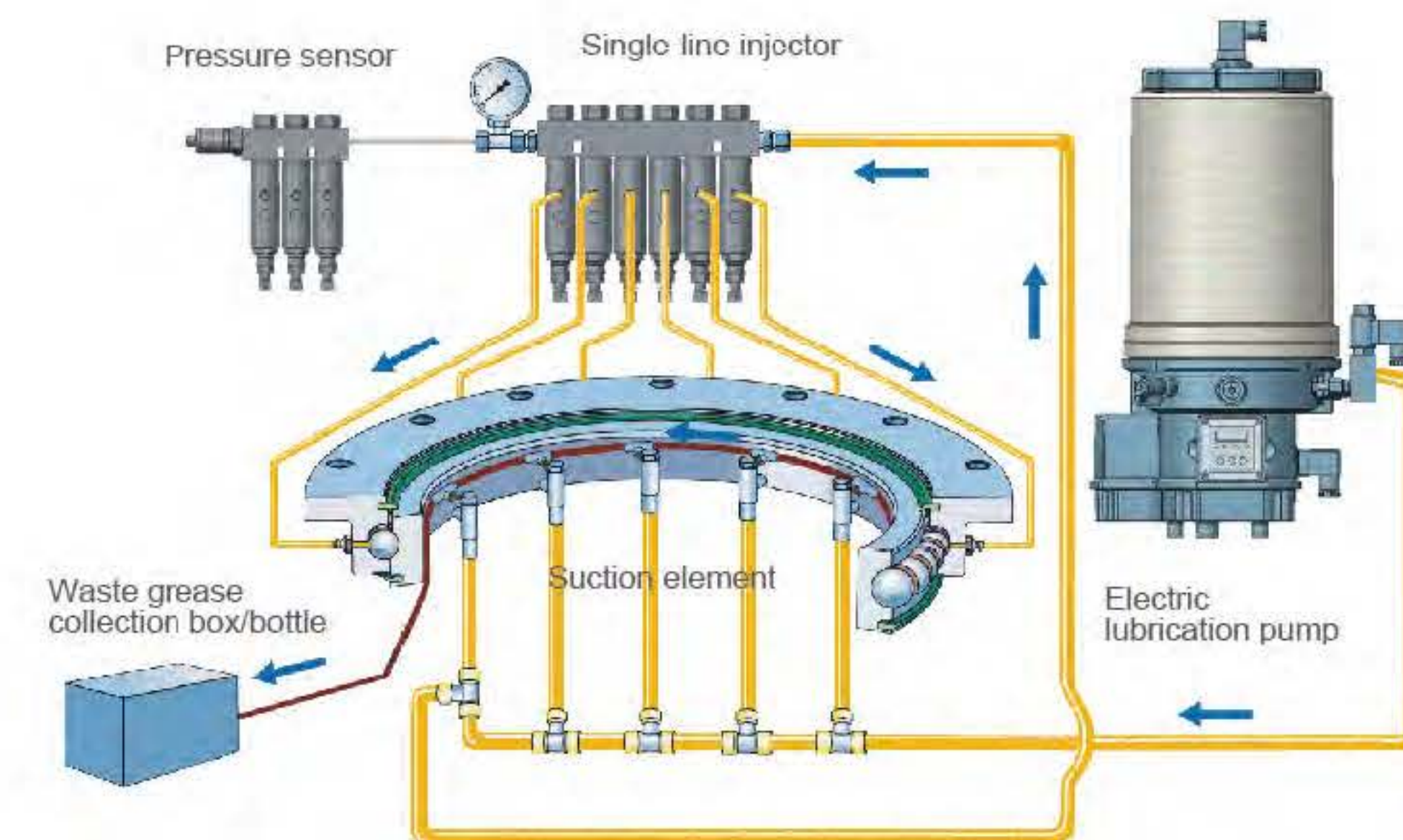
Min. Operating pressure: 100 bar

Discharge pressure: 40bar

Displacement: 0.3ml/ stroke

Working temperature: -40℃~70℃

Suitable for grease up to NLGI 2#



Cooperative working principle of single-line system and ESE-01 suction



Z-Lube Primary Drive Seal Lubrication Pump Station

Advantages of the Pump Station

- ☐ Unique designed for primary drive seal and lubrication for shield machine;
- ☐ Module design and be convenient to maintain;
- ☐ Inner follower and high& low level signal;
- ☐ Stable pump displacement;
- ☐ Suitable for grease up to NLGI#3.



Main Technical Parameters

Reservoir Capacity	30L,40L,60L ,100L
Max. Working Pressure	400bar
Rated Safety Valve Pressure	200bar or 350bar
Pump Core	KR -Ø6 or KR-Ø7
Pump Displacement	190ml/h,Ø7 piston a complete stroke ; 130ml/h,Ø6 piston a complete stroke
Pump Core Outlet Number	1-31pcs
Operation Voltage	380VAC
Rated Power	370W
Operation Temp.	-25℃-50℃



Z-Lube Electric Lubricating Pump

Z-Lube electric lubricating pump is a centralized lubricating pump with excellent performance, adopting high-standard DC motor drive. There is a worm gear in its interior, which can support up to three pump cores simultaneously. The pump body is made of highintensity plastic, that can be matched with superior carbon steel and provide better protection against corrosion, especially in salinity environment such as the ocean. Transparent plastic reservoir provides better observation on grease volume. Each pump core is protected by one safety valve. The whole pump is sealed and its protection level reaches IP65, so it is dust-proof and rain-proof. The pump is equipped with a low level control and a PCB for work control.



Technical Parameters

System Pressure	35MPa			
Reservoir Capacity	1L, 2L, 4L, 8L, 15L, 20L			
Rated Outlet Flow	Pump Element Φ5	Pump Element Φ6	Pump Element Φ7	Adjustable Pump Element
	2ml/min	2.8ml/min	4ml/min	0.7-3ml/min
Operating Pressure	12, 24VDC\ 110-240VAC			
Number of Outlet	1,2 or 3			
Outlet Thread	G1/4(BSPP) female thread			
Operating Temp.	-40℃ to 80℃			
Protection Degree	IP65			
Lubricant	Grease up to NLGI 2# or above mineral oil 40mm²/s (Cst)			



Z-Lube 230 Electric Lubricating Pump

Z-Lube 230 electric lubrication pump is a centralized lubricating pump with excellent performance, adopting high standard DC motor drive. There is a worm gear in its interior, which can support up to 3 pump cores(pistons) simultaneously. The transparent plastic reservoir provides better observation on grease volume. Each pump core is protected by one safety valve. The whole pump is sealed and its protection level reaches IP65, so it is dust-proof and rain proof. The pump is equipped with a low level control and a PCB for work control.



Technical Parameters

System Pressure	35MPa			
Reservoir Capacity	6L-30L			
Related Outlet Flow	Pump Element Φ5	Pump Element Φ6	Pump Element Φ7	Adjustable Pump Element
	2ml/min	2.8ml/min	4ml/min	0.7-3ml/min
Power Voltage	12, 24VDC\ 110-240VAC			
QTY of the Outlets	1, 2 or 3			
Outlet Thread	G1/4 (BSPP) Female Thread			
Work Temperature	-40℃ ~ 80℃			
Protection Class	IP65			
Lubricant	Grease up to NLGI 2# or above mineral oil 40mm²/s (Cst)			



Z-Lube 231 Electric Lubricating Pump

Z Lube 231 electric lubrication pump is a centralized lubricating pump with excellent performance, adopting high standard DC motor drive. There is a worm gear in its interior, which can support up to 3 pump cores(pistons) simultaneously. The pump body is made of high intensity plastic, that can be matched with superior carbon steel and provide better protection against corrosion, especially in salinity environment such as the ocean. The transparent plastic reservoir provides better observation on grease volume. Each pump core is protected by one safety valve. The whole pump is sealed and its protection level reaches IP65, so it is dust proof and rainproof. The pump is equipped with a low level control and a PCB for work control.



Technical Parameters

System Pressure	35MPa			
Reservoir Capacity	1L, 2L, 4L			
Related Outlet Flow	Pump Element Φ5	Pump Element Φ6	Pump Element Φ7	Adjustable Pump Element
	2ml/min	2.8ml/min	4ml/min	0.73ml/min
Power Voltage	12, 24VDC\ 110-240VAC			
QTY of the Outlets	1, 2 or 3			
Outlet Thread	G1/4 (BSPP) Female Thread			
Work Temperature	-40℃ ~ 80℃			
Protection Class	IP65			
Lubricant	Grease up to NLGI 2# or above mineral oil 40mm²/s (Cst)			



Z-Lube 230Plus Electric Lubricating Pump

Z Lube 230plus electric lubrication pump is a centralized lubricating pump with excellent performance, adopting high-standard DC motor drive. It can support up to 3-4 pump cores simultaneously. It is mainly used in single-line and twin-line lubrication system with externally integrated pressure sensor, electromagnetic pressure relief valve and safety overflow valve, simple and convenient for the maintenance; Reservoir of different volumes can be used, and liquid level sensor and follower plate can be selected.



Technical Parameters

System Pressure	35MPa
Reservoir Capacity	6 L-30L
Power Voltage	12, 24VDC\ 110-240VAC
Outlet Thread	G1/4 (BSPP) Female Thread
Work Temperature	-40℃ ~ 80℃
Protection Class	IP65
Lubricant	Grease up to NLGI 2# or above mineral oil 40mm²/s (Cst)



Z-Lube Pump Element, Safety Valve, Return-line Devices

Pump Element Types

- ☐ Pump element is a piston. Outside diameter determines the lubricant output for each stroke
- ☐ K5: $\Phi 5$ piston, displacement 2.0cc/min
 - K6: $\Phi 6$ piston, displacement 2.8cc/min
 - K7: $\Phi 7$ piston, displacement 4.0cc/min
- ☐ Output pressure of pump depends on assembly precision of piston.

Safety Valve Description

- ☐ Safety valve (Pressure relief valve) includes valve body, valve core, protective cover, coupling nut, cutting ring and others.
- ☐ System pressure is determined by pressure setting of safety valve, whose pressure setting should not exceed 350Bar or 270Bar in the purpose of system stability.
- ☐ Outside diameter of outlet fitting with check valve(screw type) in the safety valve is 6mm or 8mm.
- ☐ 4L and 8L pump need extension adapter.
- ☐ Return-line device can be equipped, if necessary.



Technical Parameters

Standard Supply Pressure	12-42V DC or 230V DC
Protection Class	IP40
Max. Output Current	16A
Operating Temp.	-40°C to 80°C
Lube Time Setting Range	1-9999s
Pause Time Setting Range	1-9999min
Counter Pulse Setting Range	1-9999
System Control Method	Low-level control; Pressure Switch; Cycle Switch



MPG225 Electric Lubrication Pump

MPG225 electric lubrication pump is a high pressure multi-line pump capable of supporting up to 30 pump units, suitable for progressive and single-line automatic lubrication systems, or for directly offering the lubricant to the lubrication points. Pump with modular design, camshaft, efficient turbine, as few parts as possible, can adapt to a wide range of voltage range. Pump can choose different gear ratio, different volume reservoirs, can choose 4L, 8L transparent reservoir, or 4-100L steel reservoir. In addition, the high and low level alarm is optional.



MPG225 Electric Lubrication Pump Features

- ☐ Modular design, maintenance is more convenient.
- ☐ Centralized lubrication pump is a high-pressure pump, up to 40Mpa
- ☐ Grease can be added directly to the lubrication points.
- ☐ Can be used as pump station of the progressive lubrication system.
- ☐ Pump core 1-30pcs; Pump element model: K6/K7; Outlet thread: G1/4;
- ☐ Reservoir capacity: 4-100L;
- ☐ Grease up to NLGI#2(NLGI3 is ok if specially needed)
- ☐ High and low level alarm monitor



Technical Parameters

System Pressure	40MPa		
Reservoir Capacity	4L, 8L, 10L, 15L, 20L, 30L, 40L, 60L, 100L		
Rated Outlet Flow	Pump Element $\Phi 6$	Pump Element $\Phi 7$	Adjustable Pump Element
	0.16ml/min	0.23ml/min	0.04-0.18ml/min
Operating Pressure	220, 380, 690VAC		
Number of Outlet	1-30		
Outlet Thread	G1/4(BSPF) female thread		
Operating Temp.	-40°C to 80°C		
Protection Degree	IP55		
Lubricant	Grease up to NLGI 2# (Special requirement, NLGI3 #)		



GLP Series Electric Lubrication Pump

GLP Series Electric Lubrication Pump is a high-performance, multi-purpose, high-pressure electric lubrication pump; Suitable for progressive, single-line and twin-line centralized lubrication system; Or used to add lubricant directly to the lubrication point. GLP series electric lubrication pump adopts modular design and standard reducer and motor. External pump core module, maintenance is simple and convenient; Different volume of reservoirs are available. In addition, high and low level alarm can be selected.



Technical Parameters

System Pressure	40Mpa
Reservoir Capacity	10-60L
Power Voltage	220, 380, 690V
Outlet Thread	G1/4" (BSPP)
Work Temperature	-40°C-80°C
Protection Class	IP55
Lubricant	Grease up to NLGI 3#



Pneumatic Grease Pump MGP3

Product Performance and Advantages

- ☐ Modular design and compact structure.
- ☐ Integrated vent valve assembly.
- ☐ Aerospace aluminum cylinder with high wear resistance.
- ☐ Low operating temperature-29 ℉ (-34 ℃) is applicable.
- ☐ Overload is workable.
- ☐ All components can be replaced.
- ☐ Operation independently
- ☐ Various medium and low viscosity lubricants are available.
 - Greases up to NLGI 2# are suitable.
 - Grease NLGI3# is available when follower plate is used.



Technical Parameters

Pressure Ratio	50:1
Displacement	12.8ml/stroke and max. 2750ml/min
Stroke	82.5mm
Max. Operating Pressure	517bar
Number of Outlet	1-15
Air Inlet	3/8"NPTF
Pump Outlet	1/4"NPTF
Highest Temperature of Hydraulic Fluid	93°C
Reservoir Capacity	60L



EGP-120 Electric Grease Pump

Products Performance and Advantages

- ☐ Specially satisfies the requirement of mobile devices.
- ☐ High pressure and high flow application: high flow output keeps regular grease complementary more efficient.
- ☐ Barrel is filled with lubricant
- ☐ Various medium and low viscosity lubricants are available. Greases up to NLGI 2# are suitable. Grease NLGI3# is available when follower plate is used.
- ☐ Various standard barrels with 280-320mm internal diameter are suitable.



Technical Parameters

Power Supply	24V DC, 220V AC, 380V AC
Motor Power	200W
Piston Stroke	20mm
Reciprocal Frequency	120-500 times/min
Suitable Lubricant	Greases up to NLGI 3#
Barrel Capacity	10-20L
Delivered Lubricant Quantity	318-1325ml/min
Output Pressure	Max. 50Mpa
Net Weight of Equipment	25kg
External Dimension	350×400×700
Frame	Insert Bucket
Follower Plate Configuration	Optional



Control Valve (grease gun)

Inlet Thread: 1/4NPTF or 3/8NPTF

Outlet Thread: 1/8 NPTF

Operating pressure: 7500PSI

Feature: Connected to high-pressure grease pump through rotating joints and reel. Grease dispensing and refilling manually.



TP-05 Electric Grease Pump

Products Performance and Advantages

- ☐ Designed to meet the needs of mobile devices;
- ☐ High pressure and high flow of applications: high-flow output ensures the daily grease supplement grease is faster.
- ☐ Cavity is filled with lubricating grease;
- ☐ Can be filled with a variety of medium and low viscosity grease, suitable for 2# and 2# below the grease. Equipped with follower plate, can be used for # 3 grease;
- ☐ Suitable for standard grease drums with 5KG and 18KG capacity.



Technical Parameters

Type	Piston Pump
Delivery Pressure	Max. 100bar
Installation Position	Vertical
Pump Driver	Planetary Reducer + Motor
Voltage	220VAC; 24VDC
Motor Power	120W
Displacement	500ml/min
Protection Class	IP54
Temperature for Usage	-10℃ ~ 50℃
Lubricant	Grease up to NLGI 2# or mineral oil above 40mm ² /s (Cst)
Working Temperature	-10℃ ~ 70℃
Survival Temperature	-50℃ ~ 80℃
Weight	12Kg



HPG-50 Hydraulic Grease Pump

Products Performance and Advantages

- ☐ Module design and compact structure.
- ☐ High-performance hydraulic motor.
- ☐ Integrated vent valve assembly.
- ☐ Integrated flow control valve and pressure regulating valve.
- ☐ Suitable for the low operating conditions(-29 ™ or -34 ™) .
- ☐ Replaceable components.
- ☐ Independent operation.
- ☐ Heavy-loaded.
- ☐ Full grease in the barrel ensures long and reliable operation.
- ☐ Various medium and low viscosity lubricants are available.
 - Greases up to NLGI 2# are suitable.
 - Grease NLGI3# is available when follower plate is used.



Technical Parameters

Max. Inlet Hydraulic Pressure	3500PSI(240bar)
Operating Pressure	300-450PSI (21-31bar)
Hydraulic Inlet Flow	Max.7gal/min(28L/min)
Pump Ratio	9:1(In the case of inlet pressure 20-25 bar and inlet flow not exceeding 7L/min) 11:1(In the case of higher inlet pressure and larger flow)
Displacement	114.7-737.4ml/min
Operating Temp.	-34℃ to -65℃
Solenoid Valve	24V DC
Hydraulic Inlet	SAE4
Hydraulic Outlet	SAE6
Pump Outlet	1/4" NPTF
Max. Temp. of Hydraulic Fluid	93 ℃
Reservoir Capacity	60L
Tube Material	Steel



Z-Lube Progressive Distributor

Z-Lube progressive distributor is a kind of piston valve which dispenses fixed grease each time. Lubricant from a plugged outlet is redirected to the next adjacent outlet in descending numerical order so that the next adjacent outlet will dispense two times as much lubricant as the previous outlet. Output from adjacent outlets may be combined by installing a closure plug in one or more outlets. Besides, internal passageway connection helps to avoid using T-pieces. One important feature of progressive distributor is the progressive relationship between adjacent outlets, which allows a system monitor visually and electrically.



Advantages

- ☐ Sealed by the precision of machining and assembly of piston and valve body.
- ☐ Modular design.
- ☐ Internal passageway connection.
- ☐ Multiplied lubricant output per outlet.
- ☐ Easy monitoring visually or electrically.
- ☐ Easy replaced. There will be no connection error or improper operation due to different output as other metering devices when replacing the distributor.
- ☐ Higher operating pressure

Technical Parameters

Number of Outlet	6-22
Max. Operating Pressure	35MPa
Max. Pressure Difference Between Outlets	10MPa
Displacement Per Outlet/Stroke	0.2ml
Outlet Thread	M10×1
Material	Carbon Steel
Operating Temp.	-40℃ to -80℃

Note: Outlet 1& 2 can't be plugged



Z-Lube Modular Progressive Distributor

P G-M modular progressive distributor consists of inlet section, 2-11 intermediate sections and end section. At least two intermediate sections should be included for each distributor. It is easy to adjust the number of section according to the requirement of lubricating point number and lubricant delivered speed.



Advantages

- ☐ Sealed by the precision of machining and assembly of piston and valve body.
- ☐ Modular design.
- ☐ Internal passageway connection.
- ☐ Multiplied lubricant output per outlet.
- ☐ Easy monitoring optically or electrically.
- ☐ Easy replaced. There will be no connection error or improper operation due to different output as other metering devices when replacing the distributor.
- ☐ Higher operating pressure

Technical Parameters

Number of Outlet	6-22
Max. Operating Pressure	30MPa
Max. Pressure Difference Between Outlets	10MPa
Displacement Per Outlet/Stroke	0.2ml
Outlet Thread	M10×1
Material	Carbon Steel
Operating Temp.	-40℃ to 80℃



Z-Lube Injector



Z L-SL1 and Z L-SL44 Injector



Z L-SL 32/33/42/43 injector

ZL-SL-1 and ZL-SL-44 Injector Technical Parameters

	Z-Lube SL 1	Z-Lube SL 44
Adjustable Output	0.131-1.31ml	0.131-1.31ml
Min. Operating Pressure	128bar	51bar
Max. Operating Pressure	242bar	68bar
Recommended Operating Pressure	173bar	58bar
Max. Vent Pressure	42bar	10bar
Operating Temp.	-26℃ to 176℃	-26℃ to 176℃
Lubricant	Suitable for oil, semi liquid grease or grease up to NLGI2#	Suitable for oil, semi liquid grease

ZL-SL-32/33/42/43 Injector Technical Parameters

	Z L-SL32	Z L-SL33	Z L-SL42	Z L-SL43
Adjustable Output	0.016-0.131ml	0.016-0.049ml	0.016-0.049ml	0.016-0.131ml
Min. Operating Pressure	83bar	83bar	51bar	51bar
Max. Operating Pressure	240bar	240bar	68bar	68bar
Recommended Operating Pressure	103bar	103bar	58bar	58bar
Max. Vent Pressure	13bar	13bar	10bar	10bar
Operating Temp.	-26℃ to 176℃	-26℃ to 175℃	-26℃ to 176℃	-26℃ to 176℃
Lubricant	Suitable for oil, semi liquid grease or grease up to NLGI2#	Suitable for oil, semi liquid grease or grease up to NLGI2#	Suitable for oil, semi liquid grease	Suitable for oil, semi liquid grease



Z-Lube Fixed-displacement injector / ZL-SL-P Single-line injector



Z-Lube Fixed-displacement Injector

Fixed-displacement Injector Technical Parameter

	ZL-SLM
Output	0.1, 0.2, 0.3, 0.4ml/cycle
Lubricant	GreaseUp to NLGI 2, oil CST≥40ml
Operating Temp.	-40℃~70℃
Operating Pressure	140bar~300bar
Pressure Relief	≤60bar
Lifetime	min20000 cycles
Mounting Interface	G 1/4
Injector Output	G 1/8
Working Status	Visual check the indicator



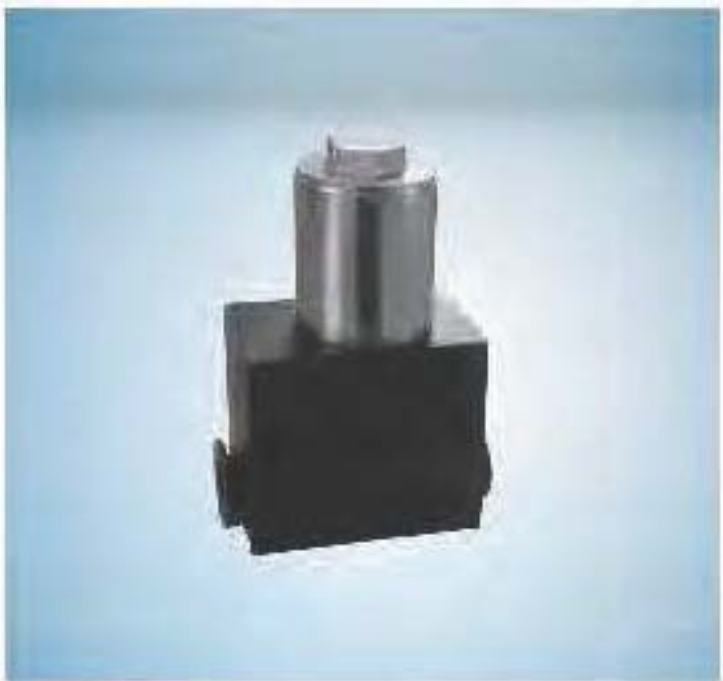
ZL-SL-P Single-line Injector

ZL-SL-P Single-line Injector Technical Parameter

	ZL-SLP
Output	0.1-0.7ml
Lubricant	GreaseUp to NLGI 2, oil CST≥40ml
Operating Temp.	-40℃~70℃
Operating Pressure	140bar~300bar
Pressure Relief	≤60bar
Lifetime	min100000 cycles
Working Status	Visual check the indicator



Z-Lube Lubricated Pinion, Waste Grease Collection Bottle, Grease Filter



Lubricated Pinion Description

Lubricated Pinion is a innovative lubrication solution to distribute lubricant on the teeth evenly. Advantages are as below: Centralized lubrication system supplies lubricant with a directional flow, only for mesh gear and without excessive lubrication and pollution.

Technical Parameters

Lubricants: Greases up to NLGI 2#
Working Temp.: -30℃ to + 80℃
Tooth Module: 10,12,14,16,18,20,22,24
Tooth width: Customized
Mounting Bracket: Customized
Working pressure :3-30MPa

Lubricated Pinion Description

Lubricated Pinion is a innovative lubrication solution to distribute lubricant on the teeth evenly. Advantages are as below: Centralized lubrication system supplies lubricant with a directional flow, only for mesh gear and without excessive lubrication and pollution.

Technical Parameters

Lubricants: Greases up to NLGI 2#
Working Temp.: -30℃ to + 80℃
Tooth Module: 10,12,14,16,18,20,22,24
Tooth width: Customized
Mounting Bracket: Customized
Working pressure :3-30MPa
Material: PA

Waste Grease Collection Bottle Description

The waste grease bottle is generally located in the unloading port of the bearing with a bottom-mounted exhaust pipe.

Technical Parameters

Material: LDPE
Working temperature: -30℃ to + 80℃
Capacity: 250ML, 500ML
Interface Thread: Customized

Grease Filter Description

Can effectively remove grease impurities in the grease lubrication system to ensure clean. Its advantage is small and easy to install. It has no plug alarm.

Technical Parameters

Working pressure: Max. 35Mpa
Filtration precision: 100μm
Outlet size: R1/4
Inlet size: R1/4
Lubricants: Greases up to NLGI 2#
Working temperature: -30℃ to 80℃



Z-Lube Manual Grease Guns



Production Description

- ☐ One-hand Operated. ☐ 18" tube.
- ☐ Integrated casting and high pressure pump head.
- ☐ Capacity: 16 ounces / bulk grease, 14.5 ounces / grease ☐ Length: 213 / 4".
- ☐ Professional grease gun widely used in: vehicle, agricultural machinery, wind energy, engineering machinery, truck and other general industrial fields

Advantages

- ☐ Strong and durable gun barrel and spray head
- ☐ Visual gear is convenient to clean with no disassembly.
- ☐ Anti clogging trigger avoids sudden bend and stuck of the piston.
- ☐ Special rotating rod provides an excellent sealing for barrel and bulk grease.
- ☐ High accuracy and high hardness of the piston avoid improper operation in the lubrication, keeping good performance for a longer time.
- ☐ Strong follow-up spring ensures centrifugal suction of grease and continuous grease pumping.
- ☐ Rotating rod lock in the rotating rod can keep max. internal pressure.

Specifications and Models

Model	Operating Pressure (psi)	Bursting Pressure (psi)	Output(g)/stroke	Capacity(ml)
DZ450-AR	7500	13500	1.35	470
SZ450-AR	7500	13500	0.95	470
DZ650-AR	7500	13500	1.35	630



Grease Nipple(Coupler)

- ☐ Connected with metal tube and high pressure hose
- ☐ Mating thread: 1/8NPTF
- ☐ Max. pressure: 15000psi
- ☐ Made of high-strength steel with a special heat treatment process to ensure durability and repeated use.

Tube Components



Length	Thread	Pressure (20 °C)
Hose 12"	1/8NPTF×2	15000psi
Hose 18"	1/8NPTF×2	15000psi
Metal tube(straight) 5"	1/8NPTF×2	
Metal tube(straight) 5"	1/8NPTF×2	



Fittings



Distributor outlet fitting



Distributor inlet fitting



Closure plug



Thread sleeve and hose stud



Bajno Connector



High pressure hose



Elbow connector for lubricating point connection



Tube clamp with rubber lining



Union



Plastic helix



Spring coil

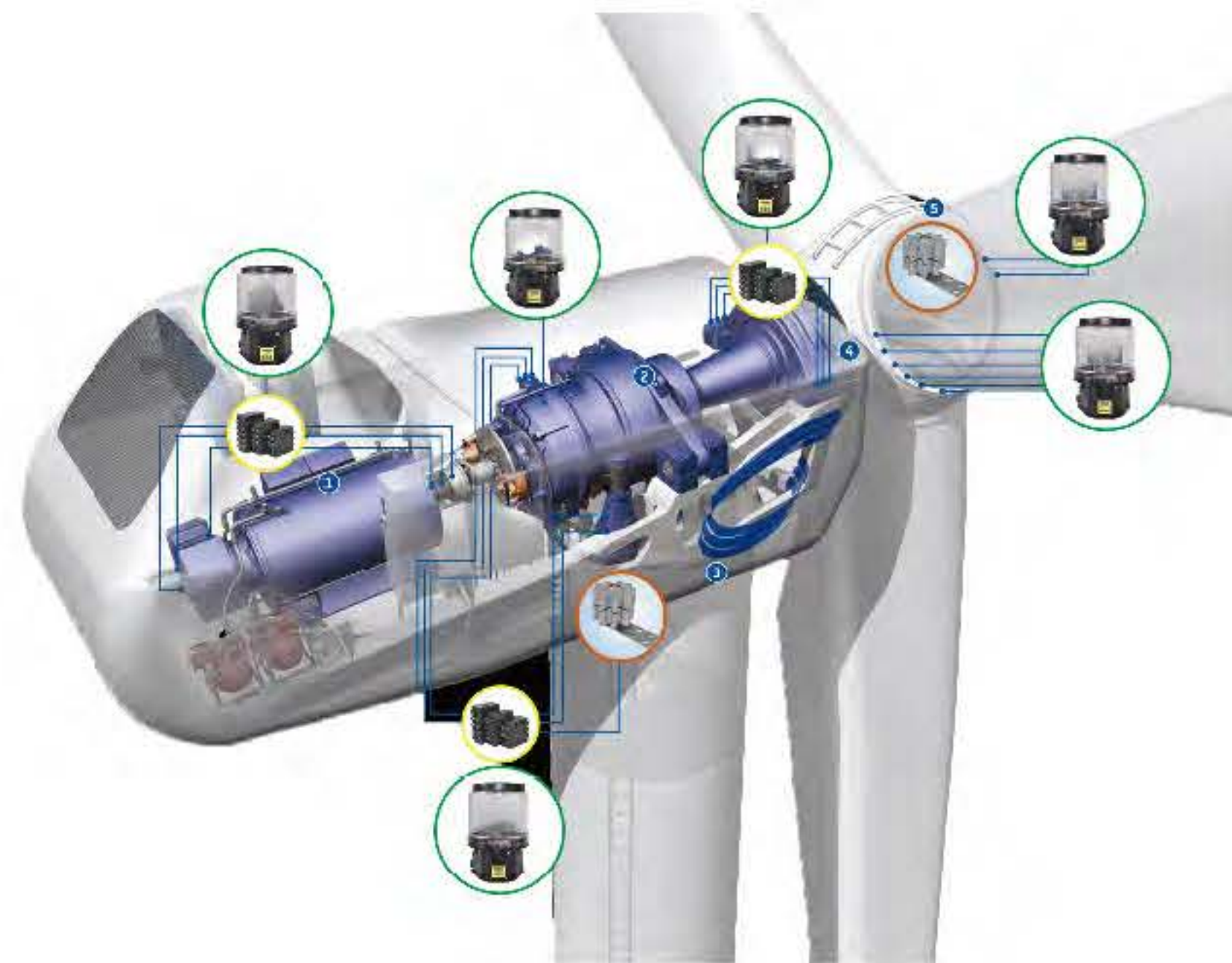


Electric pump protective box

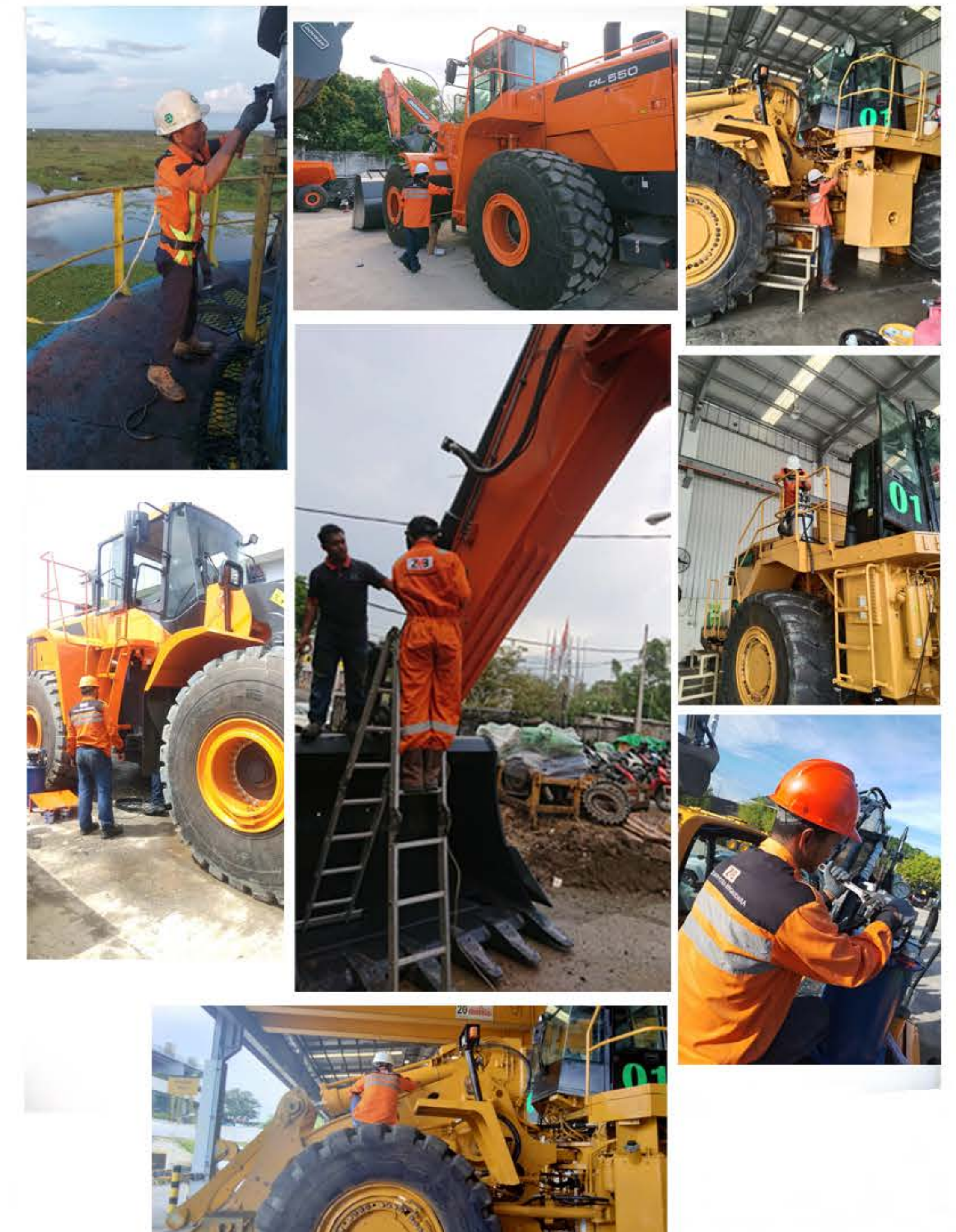
Lubrication System Application in Wind Turbine

No matter how the wind turbine is designed, its bearing and gear need to be lubricated properly. Central lubrication system can simplify the service task, extend the maintenance task and protect the equipment under different climate conditions. Expensive and unplanned maintenance and downtime can be avoided, while prolonging the service life. Researches show that the lubrication cost could be returned within one year.

Application position	Lubrication system
Bearing and gear of pitch system	Electric lubrication pump/progressive distributor/lubrication pinion
Bearing and gear of yaw system	Electric lubrication pump/progressive distributor/lubrication pinion
Main bearing system	Electric lubrication pump/progressive distributor
Generator bearing system	Electric lubrication pump/progressive distributor



Installation and Technician's Working Scene





Application of Z-Lube Centralized Lubrication System in the Engineering Machinery and Vehicle

Z-Lube centralized lubrication system dispenses fixed amount grease at the right time, providing a regular and reliable maintenance. Compared to the manual lubrication, Z-Lube centralized lubrication system can use minimum lubricant to keep optimal quantity in the bearing for a longer time. Commercial vehicles are still moving during lubrication so that the bearing edge and interior can be evenly lubricated and completely cleaned, while forming a water-proof and dust-proof film to increase service life of the bearing directly, reduce downtime, save maintenance cost.

In the case of more lubricating points on the vehicle, Z-Lube centralized lubrication system will generate more obvious economic benefits.



Installation Scene





Application of Z-Lube Centralized Lubrication System on the Mining Equipment



Achievement

Owner	Project Name (Wind farm)	Customer	Wind Turbine Type	Wind Turbine Amount	Application
Datang	Datang Mianchi	Dongfang Electric	2.5MW	52	blade,yaw & main bearing
Sichuan energy investment	Huidong snow moutain	Dongfang Electric	2.5MW	34	blade,yaw & main bearing
Sichuan energy investment	Iuyintang	Dongfang Electric	2.5MW	31	blade,yaw & main bearing
China Power	Beima two phase	Dongfang Electric	2.5MW	20	blade,yaw & main bearing
CGNPC	Jiange Yaoling	Dongfang Electric	2.0MW	50	blade & main bearing
Guodian	Hebei Hengshui Fucheng	Godwind	2.0MW	75	yaw
Huaneng	Liaoning Fuxin two phase	Godwind	2.5MW	20	blade & main bearing
Shanxienergy	Wenxi hedi	Godwind	2.0MW	45	yaw
longyuan	Dafeng three phase offshore	Godwind	2.5MW	80	yaw
longyuan	Dafeng four phase offshore	Godwind	2.5MW	25	blade & main bearing
Shandong energy	Qinghai luneng	Godwind	2.0MW	185	yaw & main bearing
Tianrun	Shitangshan two phase	Godwind	1.5MW	30	yaw
CPIC	Qinghai Hainan Gonghe	Godwind	2.0MW	225	yaw
Huayangshengyuang	Qinghai Haixi Wulian Huayang Shengyuan	Godwind	2.XMW	91	yaw
longyuan	Jiangshu Dafeng H7 offshore	Godwind	2.5MW	80	blade,yaw & main bearing
CTGNE	Qinghai Xitieshan Liushaping two phase	Godwind	2.XMW	50	yaw
Shandong energy	Neimenggu erenduoshi Hangjinqi	Godwind	2.0MW	50	blade,yaw & main bearing
CGNPC	Henan Ruzhou Dayu 1 phase	Godwind	2.0MW	25	blade,yaw & main bearing
Guodian	Shirenliao	United Power	2.0MW	100	blade,yaw & main bearing
Guodian	Kangbao2-3 phase	United Power	2.0MW	100	blade,yaw & main bearing
longyuan	Weichang Qixin	United Power	2.0MW	150	blade,yaw & main bearing
Xiexing	Xiexin Rudong offshore	Shanghai Electric	4.0MW	50	blade,yaw & main bearing
longyuan	Nanridao 1 phase B zone	Shanghai Electric	4.0MW	46	blade,yaw & main bearing
CGNPC	Fujian Daliang island	Shanghai Electric	4.0MW	59	blade,yaw & main bearing
Guohua	Jiangshu Dongtai	Shanghai Electric	4.0MW	63	blade,yaw & main bearing
Guodian	Guangxi Bingyang Doublebrige	Shanghai Electric	2.1MW	24	blade,yaw & main bearing
Datang	Daqing Hongwei	Shanghai Electric	2.0MW	25	blade,yaw & main bearing
CGNPC	Pinlu 3 phase	Shanghai Electric	2.1MW	20	blade,yaw & main bearing
CEEC	Anhui Dongzimuta	Shanghai Electric	2.1MW	24	blade,yaw & main bearing
SDIC	Dongchuan Yeniu	Shanghai Electric	2.0MW	24	blade,yaw & main bearing
longyuan	Jiangshu Rudong Jiangjiasha offshore	Envision	4.0MW	63	blade,yaw,main bearing &generator
Guodian	Leizhenshan	Envision	3.0MW	29	blade,yaw,main bearing &generator
Guodian	Qinghai Yellow river shuidian duogongneng Hubu	Envision	2.XMW	180	blade,yaw,main bearing &generator
Guohua	Kangbao 1&2 phase	Envision	2.2MW	140	blade,yaw,main bearing &generator
Guohua	Shiqiaozi Jinshan	Envision	2.XMW	40	blade,yaw,main bearing &generator
Huadian	Shanxi Salt lake 2 phase	Envision	2.5MW	36	blade,yaw,main bearing &generator
Huaneng	Gaolongshan	Envision	2.XMW	68	blade,yaw,main bearing &generator
Huaneng	Kangbao Xujiaying	Envision	2.XMW	40	blade,yaw,main bearing &generator
CGNPC	Huanghai 2 phase	Envision	1.5MW	33	blade,yaw,main bearing &generator
Hebei construction	Hebei Weixiang Mingpu	Envision	2.5MW	33	blade,yaw,main bearing &generator
Huaneng	Huneng Dafeng	Envision	4.5MW	46	blade,yaw,main bearing &generator
longyuan	Guangxi Bobai Shifangzhang	Envision	2.X	44	blade,yaw,main bearing&friction plate
Jiangsu guohe	Jiangshu Guohe	Envision	2.X	41	blade,yaw,main bearing&friction plate
Shanxienergy	Shanxi Lingqiu Fenghuang	Envision	2.X	23	blade,yaw,main bearing&friction plate
Il uaren	Il enan Anyang Yonghe	Envision	2.X	115	blade,yaw,main bearing&friction plate
Huaren	Gongdong Fugang Fuxin	Envision	2.X	20	blade,yaw,main bearing&friction plate
Suzlon	Suzlon India	Suzlon Energy	2.X	30	blade,yaw,main bearing &generator